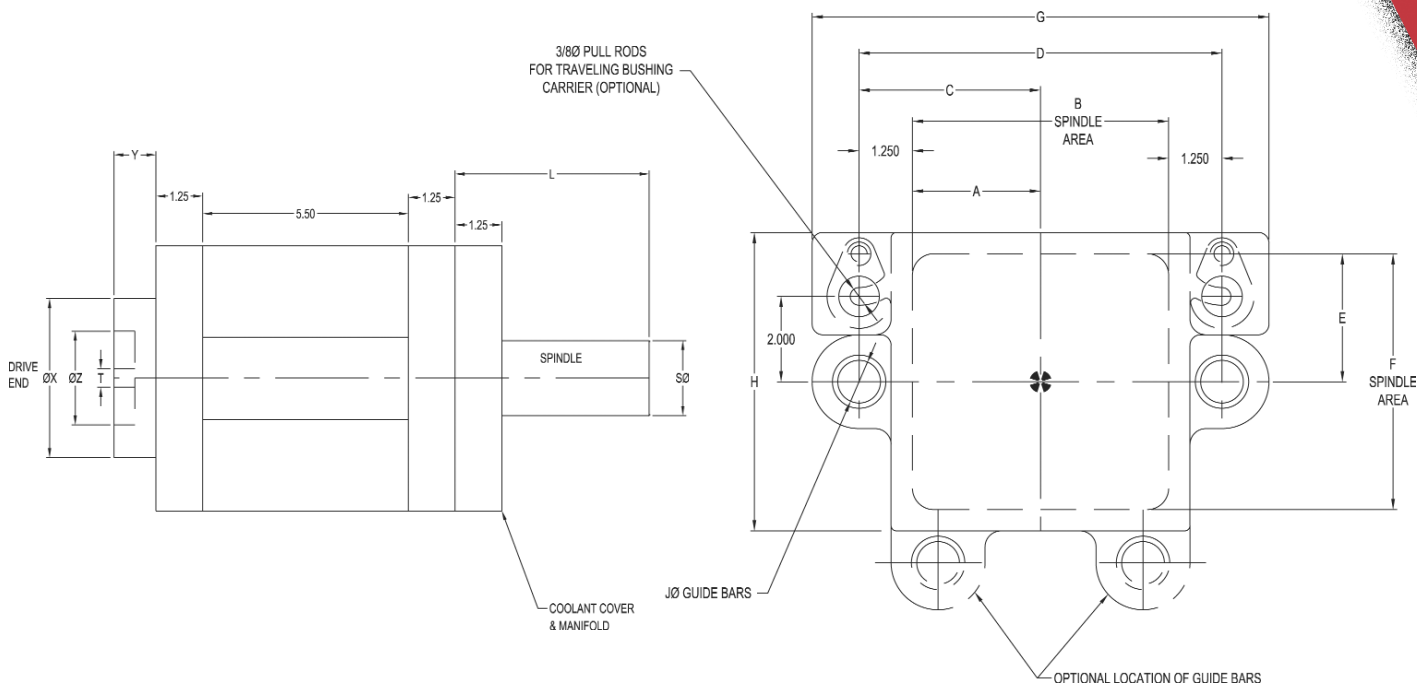


# STANDARD CASTING - AUTOMOTIVE QUALITY HEADS



Note: Oil head up to 5000 RPM  
 1) Lubrication: Use BP Gearep #90 or equivalent grade gear oil.  
 2) Check oil level height regularly. Change every 1000 hours of service.

Note: Grease head up to 3000 RPM  
 1) Lubrication: Use Lubriplate or equivalent grade grease.  
 2) Check grease level every 24 hours. Change every 1000 hours of service.

## Specifications (Unit: inch)

Frame Size	A	B	C	D	E	F	G	H	J
5 x 5	2.50	5.00	3.7500	7.5000	2.50	5.00	9.63	6.00	1.0000
6 x 6	3.00	6.00	4.2500	8.5000	3.00	6.00	10.63	7.00	1.0000
8 x 8	4.00	8.00	5.2500	10.5000	4.00	8.00	12.63	9.00	1.2500
10 x 10	5.00	10.00	6.2500	12.5000	5.00	10.00	14.63	11.00	1.2500
6 x 8	4.00	8.00	5.2500	10.5000	3.00	6.00	12.63	7.00	1.0000
6 x 10	5.00	10.00	6.2500	12.5000	3.00	6.00	14.63	7.00	1.0000
6 x 12	6.00	12.00	7.2500	14.5000	3.00	6.00	16.63	7.00	1.2500
8 x 10	5.00	10.00	6.2500	12.5000	4.00	8.00	14.63	9.00	1.2500
8 x 12	6.00	12.00	7.2500	14.5000	4.00	8.00	16.63	9.00	1.2500

Spindle Size	L	S
3/8 AA	3.500	.68
1/2 AA	3.750	.735
5/8 AA	3.750	.985
3/4 AA	3.750	1.235
7/8 AA	4.250	1.360
1 AA	4.250	1.484
1-1/16 AA	4.250	1.610
1-1/4 AA	5.250	1.75
1-3/8 AA	5.250	1.985

Drive Size Flange Mtg.	X	Y	Z	T
Standard Duty (600 in-lbs)	4.25	1.125	2.2490	.500
High Torque (3000 in-lbs)	5.75	1.250	3.8740	.875

**Inspection & Tolerance**  
 Spindle runout .002 at spindle end  
 Spindle parallelism .001 in 4" of length  
 Spindle spacing & length ± .001  
 Guide bar spacing ± .001